

Isoblocs

High Load Anti-Vibration Levelling Mounts

Performance

Isoblocs have been developed specifically for, although their use is not limited to, stamping presses to provide effective vertical and horizontal shock absorption, vibration isolation and damping as well as easy and precise levelling on a much larger scale than Isomounts.

Load range from 7,500kg up to 50,000kg per mount.

Layout Flexibility

Isoblocs provide a simple, economical and flexible solution to factory or plant room layout planning, enabling easy installation and movement of machines without the need for bolting down or grouting.

Quality & Durability

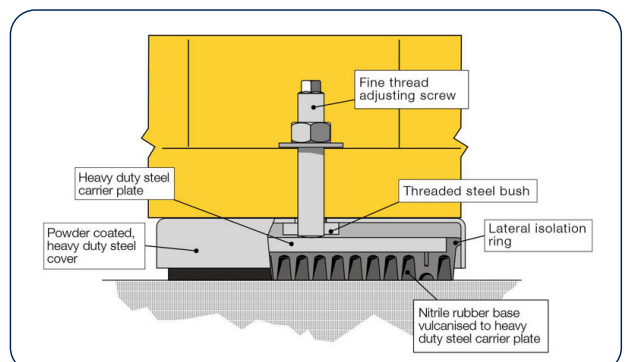
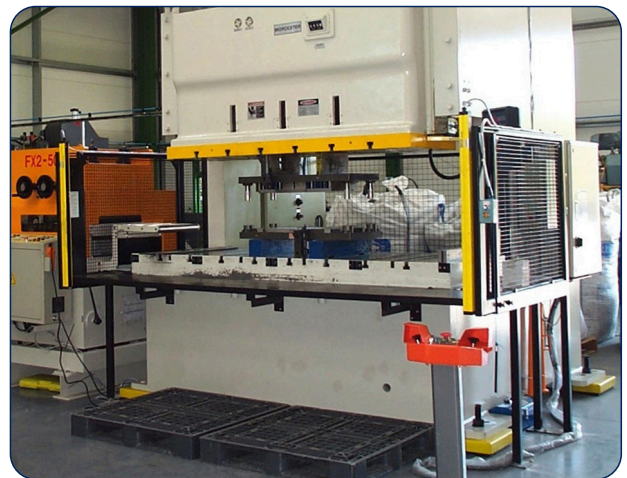
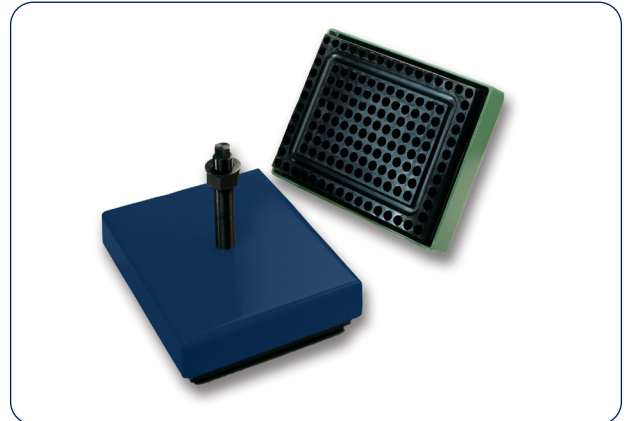
Isoblocs are manufactured from the highest quality powder coated steel and Farrat NBR isolation materials. The design has been continuously improved to ensure long term durability against mechanical degradation and chemical corrosion. This is proven with hundreds of worldwide industrial applications.

Features

- ▶ Load capacity up to 50 tonnes
- ▶ Precision fine screw thread height adjustment
- ▶ Excellent, proven, vertical and horizontal shock and vibration isolation performance
- ▶ Machine installation without bolting down or grouting

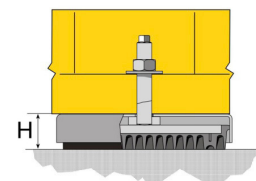
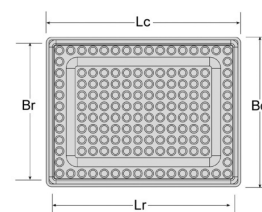
Typical Applications

- ▶ Presses: Forging, Hydraulic and Mechanical
- ▶ Diecasting machines
- ▶ Diesel Generators
- ▶ Injection Moulding Machines



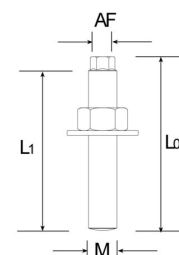
Technical data

Isobloc (ISB) - Dimensions and Capabilities						
Isobloc (ISB)	ISB variants		Units	Isobloc ISB 10	Isobloc ISB 25	Isobloc ISB 50
Maximum Load / Mount	-70		kg	7,500	18,000	36,000
	-80		kg	10,000	25,000	50,000
Cover	Length	Lc	mm	284	434	675
	Width	Bc	mm	234	334	475
Rubber base	Length	Lr	mm	250	400	600
	Width	Br	mm	200	300	400
Overall Mount Height (unloaded) Max	Min	Hmin	mm	87	87	150
		Hmax	mm	109	109	180
Height Adjustment			mm	22	22	30



Isobloc (ISB) - Static Spring Constant (K)						
Isobloc (ISB)	ISB variants		Units	Isobloc ISB 10	Isobloc ISB 25	Isobloc ISB 50
Vertical	-70	Ksv	kN/mm	6.25	15	29
Horizontal	-70	Ksv	kN/mm	2.3	5.5	10
Vertical	-80	Ksv	kN/mm	9	22	42
Horizontal	-80	Ksv	kN/mm	3.3	8	14
Damping Factor		C/Cc		0.09	0.09	0.09
Ratio Dynamic to Static Modulus				2.4	2.4	2.4

Isobloc (ISB) - Standard Adjusting Screws (SH)							
Chemically Blacked Steel Grade 8.8 with 1 Nut & 1 Washer - Dimensions in mm							
For ISB variant		10	10	10, 25	25, 50	25, 50	50
Threads	SH	M24 x 1.5	M30 x 1.5	M36 x 1.5	M42 x 1.5	M48 x 2.0	M56 x 2.0
AF	mm	17	24	27	32	36	41
Length - Lo* (to be specified)	mm	170	170	220	220	220	220
Lengths - L1	mm	160	160	200	200	200	260



Order example (mount + screw assembly): ISB10-70 + SH30x1.5x170