

AWTH Acoustic Washer

Neoprene top-hat washer with integrated bush

Why choose Farrat AWTH Acoustic Washers?

Farrat AWTH Top-Hat washers are the most efficient way to acoustically isolate bolt-through connections by providing a complete separation of the bolt and the isolated structure.

Features

- ▶ Used in conjunction with acoustic / anti-vibration pads to provide a high degree of vibration isolation by providing a resilient connection where bolt-through fixings are necessary for stability and security
- ▶ Incorporated bush prevents acoustic bridging by separating the bolt from the steelwork
- ▶ Manufactured for durability, performance and ease of on site installation by vulcanising a zinc plated washer to a moulded Chloroprene (Neoprene) acoustic washer and sleeve (bush)
- ▶ Good oil, chemical and fire resistance
- ▶ Operating temperature range from -10 to +90°C
- ▶ Fire rating / building material class: B2

Applications

Farrat AWTH can be used in any bolt-through connection which requires acoustic isolation such as:

- ▶ Steelwork isolation in building structures
- ▶ Machine / plant holding down bolts
- ▶ Push / pull acoustic connections
- ▶ Facade fixings.

Important Note:

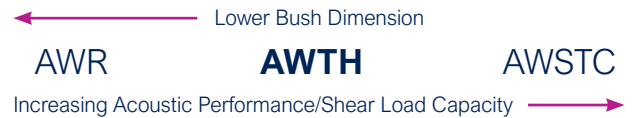
Holes in steelwork need to be oversized to accommodate the isolation bush, see column E of the table overleaf. If oversized holes are not possible then Farrat AWR washers which do not have an isolation sleeve can be used, however acoustic performance may be reduced.

For more information on using AWTH Acoustic Washers (including standard details), please see the following Farrat Technical Brochure:

- ▶ **Application - Cinemas**
- ▶ **Applications - Secondary Steelwork Isolation**

Available to download at: www.farrat.com

Farrat Acoustic Washer Range:



See overleaf for typical details

AWTH Acoustic Washer site applications:



AWTH WASHER	BOLT COMPATIBILITY	DIMENSIONS					FARRAT ORDER CODES		
		A	B	C	D	E	SINGLE WASHER	BOX QTY	WASHER BOX
		mm	mm	mm	mm	mm			
AWTH06	M6	25	6	5	9	16	1AWTH06	150	1AWTH06-150
AWTH08	M8	26	8.5	5.5	10	12.5	1AWTH08	150	1AWTH08-150
AWTH10	M10	30	10.5	6	10	14.5	1AWTH10	100	1AWTH10-100
AWTH12	M12	40	13	6.5	10	16.5	1AWTH12	50	1AWTH12-050
AWTH16	M16	50	17	8	10	22.5	1AWTH16	36	1AWTH16-036
AWTH20	M20	61	21	9	10	27	1AWTH20	20	1AWTH20-020
AWTH24	M24	65	25	10	10	31	1AWTH24	20	1AWTH24-020

NORMAL APPLICATIONS			MAXIMUM LOADING		
TORQUE	NO. OF TURNS	STATIC DEFLECTION	TORQUE	NO. OF TURNS	STATIC DEFLECTION
Nm	-	mm	Nm	-	mm
Not Applicable					
2.5	1/3	0.4	4	1/2	0.6
5.5	1/4	0.4	8	1/3	0.6
18	1/4	0.4	28	1/3	0.6
22	1/4	0.5	33	1/3	0.8
52	1/4	0.6	79	1/3	0.9
56	1/4	0.6	85	1/3	0.9

Torque values and dimensions quoted refer to usage with dry, unplated metric bolt sizes with coarse threads.

Fig 2.1 Dimensions - Plan View

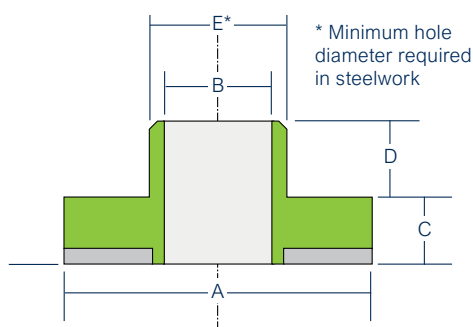


Fig 2.2 Dimensions - Isometric View

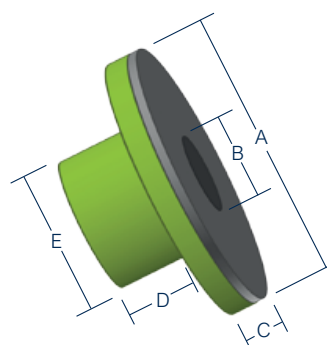


Fig 2.3 AWTH - Baseplate Detail (Steel to Steel)

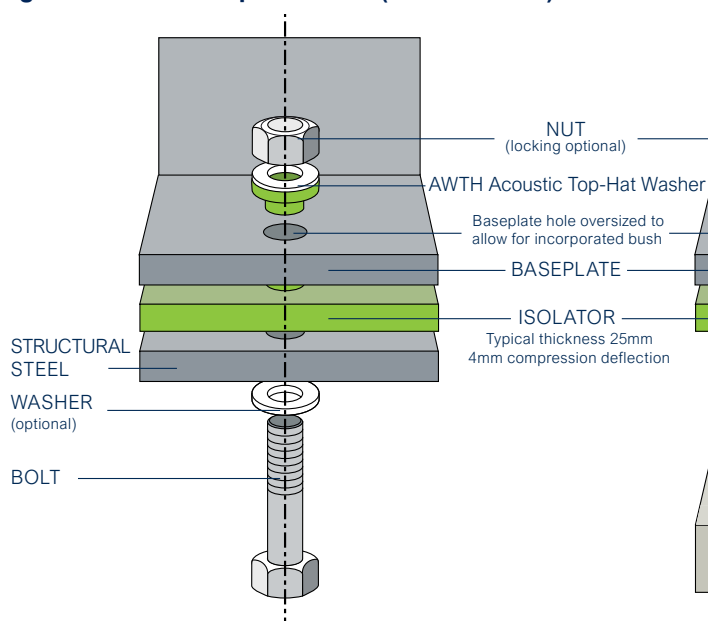
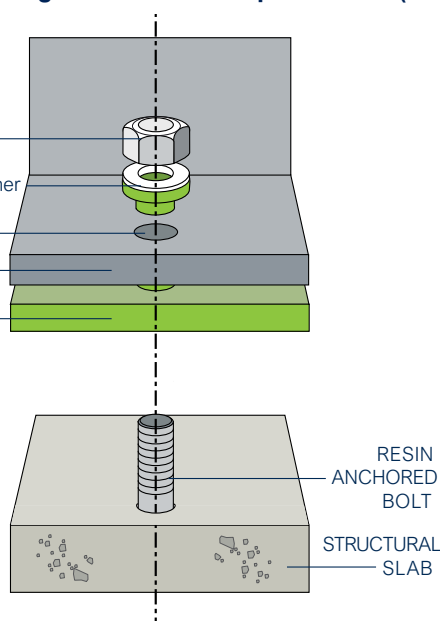


Fig 2.4 AWTH - Baseplate Detail (Steel to Concrete)



All information in this datasheet is for guidance only based on current knowledge and may be subject to change and correction.