

## CineSTEEL MAX

Designed specifically for 4DX auditoria, CineSTEEL **MAX** incorporates high damping isolators to control and constrain vibration while still providing exceptionally high sound insulation.



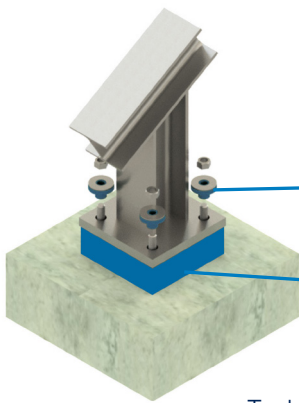
12 Hz Natural Frequency



90 mins Fire Resistance

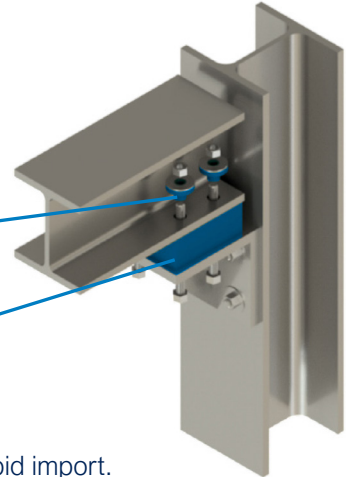


Up to 15 years warranty



CineSTEEL **MAX**  
Acoustic Washer

CineSTEEL **MAX**  
Acoustic Isolator



Technical specifications are available on RIBA NBS plus for rapid import.

### Features:

- ▶  $f_n$  @Operating Load: **12Hz**
- ▶  $f_n$  @Dead Load: **14Hz**
- ▶ Max Pressure: **4.0 N/mm<sup>2</sup>**
- ▶ Max Live Load: **4 x Dead Load**
- ▶ Isolator Thickness: **50mm**
- ▶ Isolator Type: **Point Load, Bespoke-cut**
- ▶ Warranty: **Up to 15 years**

Our highest performing steelwork isolation system is based on hot-rolled structural steel supporting 150 mm thick cast in-situ concrete stadia and has been developed following years of research into cinema motion technology.

Future-proofed using the most extreme calibration routines from 4DX suppliers, CineSTEEL **MAX** not only isolates the vibration from adjacent auditoria, but also controls the inertial response in the structure that the 4DX seats are mounted to, offering superior motion feedback and a more immersive 4D experience.

### Accreditations:



Quality Management



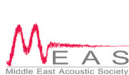
Environmental Responsibility



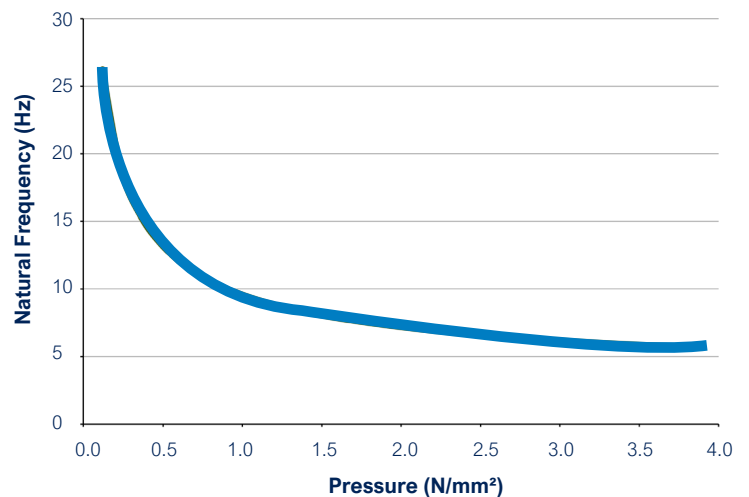
Performance Testing



Sponsors



### Performance:



### Test/Assessment Standards:

Test data and standards followed for both static and dynamic material properties are provided within project specific calculations from Farrat.

Please contact us to request a copy of the fire resistance report.

Our acoustic isolators provide complete flexibility in terms of dynamic stiffness and damping. Where necessary we can design bespoke configurations to match your precise needs.

## CineSTEEL MAX

The Farrat CineSTEEL range was developed following the successful delivery of more than 200 cinemas all around the world. Our emphasis is on buildability and cost-effectiveness while maintaining the highest standards of performance, delivery, longevity and reliability.



## Ordering from Farrat:

### CineSTEEL MAX Acoustic Isolators

**Product Code:** CineSTEEL MAX acoustic isolators require bespoke calculation and design.

**Measure:** Please refer to the main CineSTEEL brochure for information on ordering bespoke designed isolators.

### CineSTEEL MAX Acoustic Washer

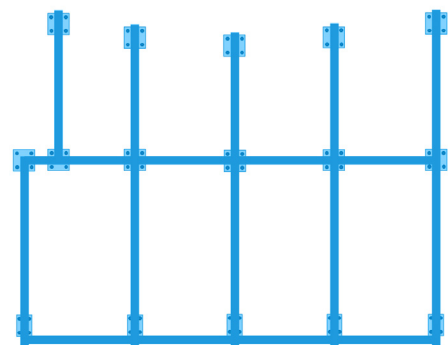
**Product Code:** 2CS-M-16/20/24

**Measure:** Acoustic washers are available for M16, M20 and M24 fixings.

All fixings through isolators should incorporate an acoustic washer. Only one side of the fixing requires an acoustic washer (one washer per bolt). Fixings to S.E Spec (typically  $\times 4$  per connection). Hole for acoustic washer = bolt diameter + 7 mm.

### Example Layout:

-  CineSTEEL MAX Acoustic Isolator
-  CineSTEEL MAX Acoustic Washer



Our CineSTEEL MAX acoustic isolators have a 2-3 week lead time. We hold stock in the **UK**, the **UAE** and **Saudi Arabia**, and regularly export worldwide.



Our team of engineers are always on hand to offer advice relating to specification, detailing and installation. We can deliver this remotely or on-site, **anywhere in the world**.



All of our CineSTEEL acoustic isolation systems are designed with **ease of installation**, durability and follow on trades in mind.



Our CineSTEEL MAX acoustic isolators are manufactured in the UK under an accredited ISO 9001:2015 quality management system. Our **performance test data** is supplied from our in-house laboratory and is regularly checked & referenced with UKAS accredited laboratories.



We regularly supply our CineSTEEL acoustic isolation systems to market leading cinema operators including: **Cineworld, VOX, VUE, Empire, REEL, Odeon** and **UCI**.